



Model **FS-56/11/PA/S** Campfire Ring
with Optional Utility Shelf

- **Designed to contain large fires for group activities**
- **Flanged firering for strength and safety**
- **Single level, hinged cooking grate**
- **Grate tips back for easy fire building and cleaning**
- **Public use-type spring grips of coiled steel bar**
- **Three fire barrier heights available**
- **Pin anchors embedded in concrete footings provide permanent location**
- **“Bottomless” design installs without concrete pad**
- **Utility shelf option**
- **Quality construction throughout**

SPECIFICATIONS:

- **Model FS-56/7/PA** shall have a 7-3/8" high fire barrier.
- **Model FS-56/9/PA** shall have a 9" high fire barrier.
- **Model FS-56/11/PA** shall have a 11-3/8" high fire barrier.
- The 56-1/4" overall dia. ring shall be fabricated from 3/16" thick steel with a formed (NOT WELDED) 1" flanged lip around the top of the ring, with 9/16" draft holes spaced around the bottom perimeter.
- 290 sq. in. grate shall be constructed from 5/8" dia. A-36 steel bars around the perimeter, 3/4" dia. A-36 steel bar for the handle and 1/2" dia. A-36 steel bars to provide the grate surface.
- Grate shall be attached to and hinge upon 2 tightly formed eyelets made from 5/8" dia. A-36 steel bar that shall make a mechanically secure theft-proof attachment.
- Grate shall tip over backward to allow unobstructed viewing of the fire by persons seated around the fire. Grate shall be supported by the ground when tipped back so grate cannot be vandalized.
- Grate handle shall be provided with two substantially constructed spring grips suitable for public use made from 1/8" x 1/2" steel flat bar.
- Ring shall be provided with four 1/2" dia. anchor pins for concrete embedment (indicated by /PA in model no.).
- Entire unit shall be finished in high temperature, heat resistant, nontoxic black enamel paint.
- **Optional:** Firering shall be provided with a 3/16" x 7-1/8" x 9-5/8" steel plate utility shelf. (Add /S to model no., e.g. FS-56/7/PA/S.)

AVAILABLE OPTIONS

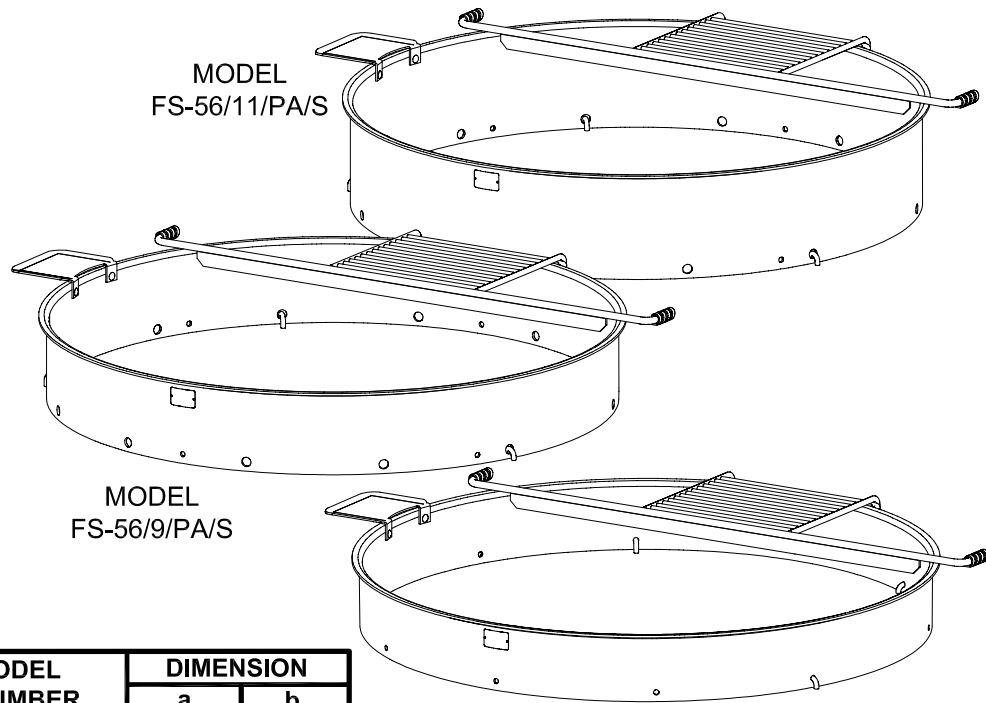
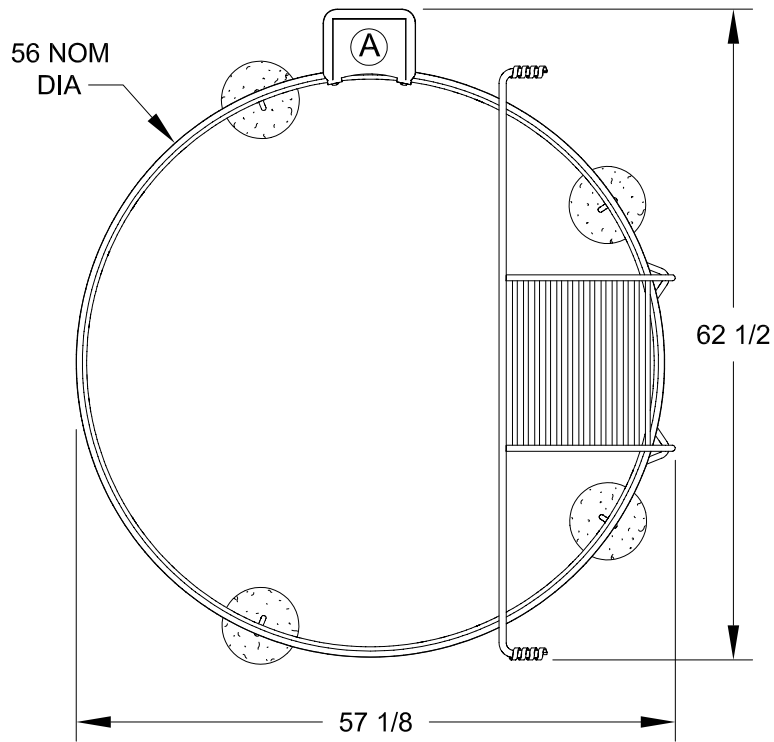
Utility Shelf

R.J. THOMAS MFG. CO., INC.

P.O. Box 946 • Cherokee, IA 51012-0946 • PH: 712-225-5115 • 800-762-5002 • FAX: 712-225-5796

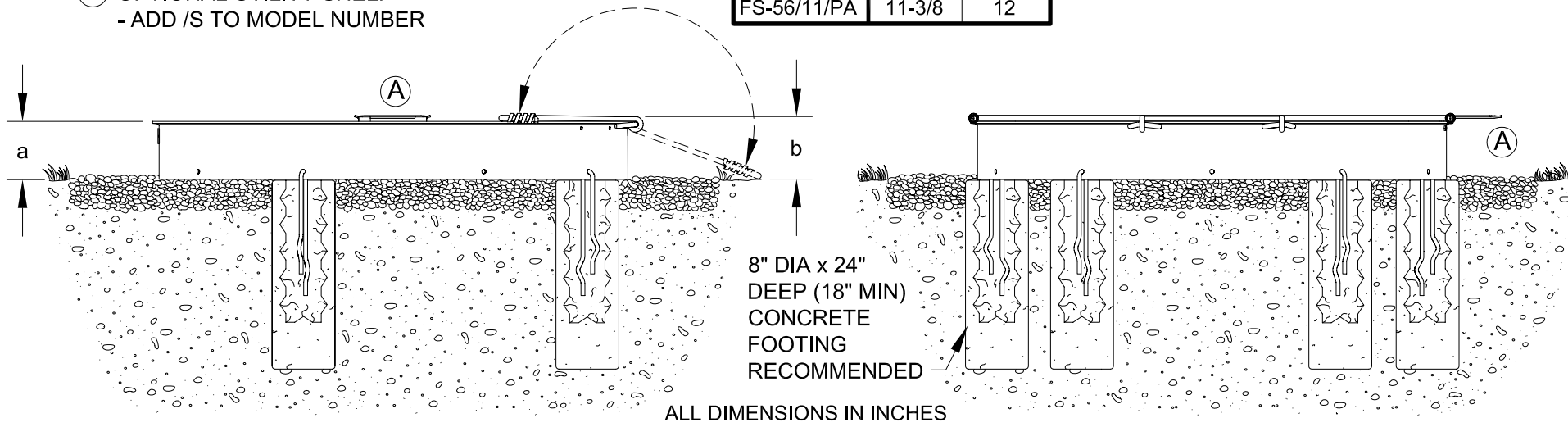
E-mail: pilotrock@rjthomas.com • Web Site: <http://www.pilotrock.com>

© 2003 R. J. Thomas Mfg. Co., Inc. PILOT ROCK® Park Equipment is a registered trademark of R. J. Thomas Mfg. Co., Inc.



MODEL NUMBER	DIMENSION	
	a	b
FS-56/7/PA	7-3/8	8
FS-56/9/PA	9	9-5/8
FS-56/11/PA	11-3/8	12

Ⓐ OPTIONAL UTILITY SHELF
- ADD /S TO MODEL NUMBER



ALL DIMENSIONS IN INCHES

R. J. **THOMAS MFG. CO., INC.**
P.O. Box 946 • Cherokee, IA 51012

DRAWN BY
WWM

TITLE FS-56 SERIES CAMPFIRE RING WITH PIN ANCHORS; 3 MODELS WITH 3 SIDE HEIGHTS -SHOWN WITH OPTIONAL UTILITY SHELF

DATE 4-18-03

DWG. NO. **AI-1457**