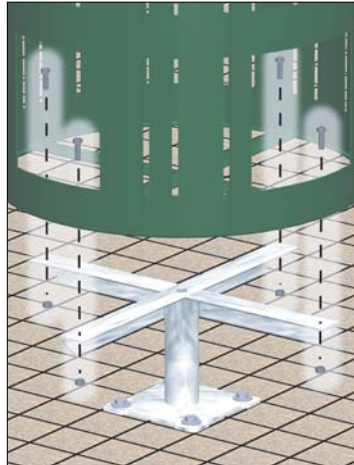


**Elevated Pedestal Mounts
 for Trash Receptacles**



Embedded Pedestal Mount

Supports receptacle 8" above ground.

Model M2/G fits TRH-32, TRQ-32, CN-RD, CN-OC.

Model M4/G fits TRH-20.

Model M8/G fits TRH-55, CN-AMR, CN-AMQ.

A 2-3/8" OD steel pipe base post, welded to structural steel angle cross arms, bolts to the cross braces in the base ring (fasteners included). The post is embedded into a concrete footing. All models are standard with a hot dip galvanized finish (G). An optional painted black enamel finish (B) is available.

Surface Pedestal Mount

Supports receptacle 8" above ground.

Model M3/G fits TRH-32, TRQ-32, CN-RD, CN-OC.

Model M5/G fits TRH-20.

Model M7/G fits TRH-55, CN-AMR, CN-AMQ.

A 2-3/8" OD steel pipe base post, welded to structural steel angle cross arms, bolts to the cross braces in the base ring (fasteners included). The post includes a 1/4" x 8" x 8" square base plate to be anchored to surface (anchor bolts not included). All models are standard with a hot dip galvanized finish (G). An optional painted black enamel finish (B) is available.

**Ground Level Stationary Mounts
 for Trash Receptacles**



Model M6/B: Seasonal Anchors for ground level installation of all TRH's and TRQ's. Four black enamel (B) steel rods install through holes in cross braces of bottom frame ring and into ground. Allows for relocation of receptacle. Also works with: CN-AMR, CN/AMQ, CN/G-EXP52, CN-RD, CN-OC. Included with RA Series Arrays.

Surface Anchoring: TRH and TRQ receptacle base frames include (4) 9/32" dia. holes in flange to allow anchoring to a concrete surface with appropriate anchors. Other receptacles also include holes in base frame for permanent anchoring to surface if desired. Anchor bolts are not provided.



Model M1G: Strap Anchor Mount for ground level installation of all TRH's, TRQ's, and CN-RD. A 10 ga. x 2" wide, "U" shaped, galvanized steel strap bolts to base ring and is embedded into a concrete footing. Receptacle is supported by base ring.

R.J. THOMAS MFG. CO., INC.

P.O. Box 946 • Cherokee, IA 51012-0946 • PH: 712-225-5115 • 800-762-5002 • FAX: 712-225-5796

E-mail: pilotrock@rjthomas.com • Web Site: <http://www.pilotrock.com>

© 2006 R. J. Thomas Mfg. Co., Inc. PILOT ROCK® Park Equipment is a registered trademark of R. J. Thomas Mfg. Co., Inc.

Pedestal Mounts for Ash Receptacles (round and square)

- Supports ash receptacle 8" above ground.
- Both models fit TRH-ASH, TRQ-ASH, AMR-ASH and AMQ-ASH ash receptacles.
- Hot dip galvanized finish is standard. Painted finishes are available.



Surface Mount

- **Model M9/G:** 1.90" OD x 11 ga. steel tube post welded to a 10 ga. steel formed mounting plate, four 7/16" bolt holes match plate in the bottom of the ash receptacle. Post includes a 1/4" x 8" x 8" square base plate to be anchored to surface (anchor bolts not included).



Embedded Mount

- **Model M10/G:** 1.90" OD x 11 ga. steel tube post welded to a 10 ga. steel formed mounting plate, four 7/16" bolt holes match plate in the bottom of each ash receptacle. Post is embedded into a concrete footing.

R.J. THOMAS MFG. CO., INC.

P.O. Box 946 • Cherokee, IA 51012-0946 • PH: 712-225-5115 • 800-762-5002 • FAX: 712-225-5796

E-mail: pilotrock@rjthomas.com • Web Site: <http://www.pilotrock.com>

© 2006 R. J. Thomas Mfg. Co., Inc. PILOT ROCK® Park Equipment is a registered trademark of R. J. Thomas Mfg. Co., Inc.