



*Model SWB/CB-6PY 6 Ft. Embedded Mount Bench  
with Black Powder Coat Frames  
and Yellow Recycled Plastic 4" x 4" timbers.*

- **Sturdy welded steel construction**
- **Flat design with Bull-nosed outside timbers**
- **100% Recycled Plastic seat timbers with solid color and U.V. stabilizer for ultraviolet protection**
- **Precision drilled plastic timbers**
- **Fast, easy assembly using 3/8" dia. galvanized carriage bolts**
- **Quality construction throughout**

### **SPECIFICATIONS:**

- **Model SWB** end frames shall be one-piece welded construction with 2-1/2" x 2-1/2" square steel post. Seat bracket shall be constructed of 3/8" x 4" A-36 flat steel bar to mount four 3" x 4" timbers.
- Benches shall be permanently anchored by embedding bench legs in concrete footings.
- **Model SWB/G-4PC** shall be a nom. 4 ft. in length with two (2) frames.
- **Model SWB/G-6PC** shall be a nom. 6 ft. in length with two (2) frames.
- **Model SWB/G-8PC** shall be a nom. 8 ft. in length with three (3) frames.
- **Standard:** Finish shall be hot-dip galvanized after fabrication to ASTM-A123 to maintain an average zinc coating of 2.0 oz. per sq. ft. of surface area (indicated by "/G" in model no.).
- 3/8" galvanized carriage bolts and nuts shall be provided for timber connections.
- **Standard:** Seat shall be made of 100% Recycled Plastic molded into 4" x 4" nominal sized timbers with solid Cedar color (indicated by "PC" in model no.) formed throughout and a U.V. stabilizer added for ultraviolet protection.
- **Optional:** Color choices of powder coated steel frame components. For optional colors choices see Specification Bulletin # SPC-CO-001.
- **Optional:** Frame shall be finished in Black enamel paint. To specify, change "/G" in model no. to "/B", e.g. SWB/B-6PC.
- **Optional:** Color choices of Recycled Plastic components. For optional colors choices see Specification Bulletin # SPC-CO-001.
- **Optional:** In lieu of carriage bolts, zinc plated lag screws shall be provided for timber connections – please specify when ordering.

### **AVAILABLE OPTIONS**

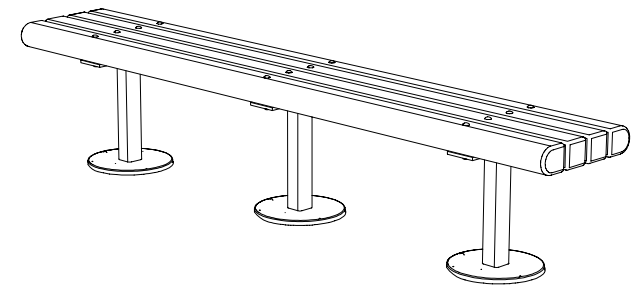
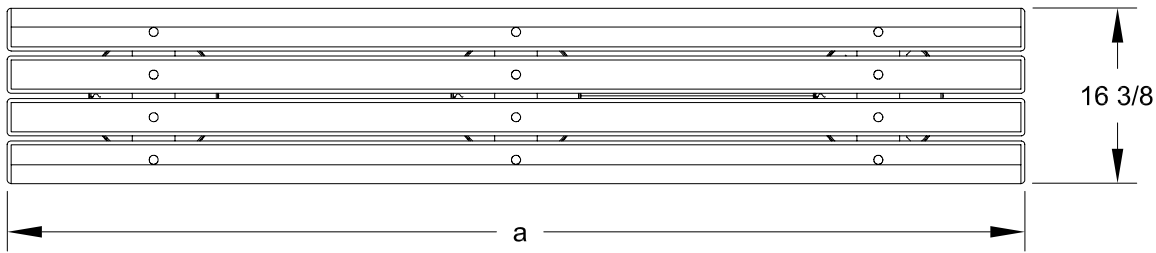
- 4', 6', or 8' models
- Powder Coat Finish in choice of colors or Black Enamel
- Painted steel frame components
- Choice of colors of Recycled Plastic Armrests

**R.J. THOMAS MFG. CO., INC.**

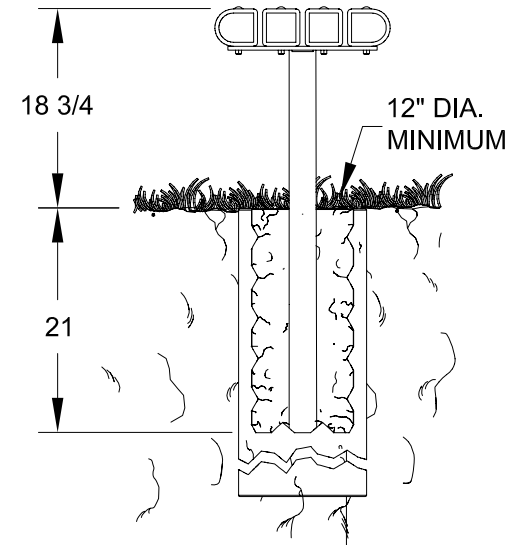
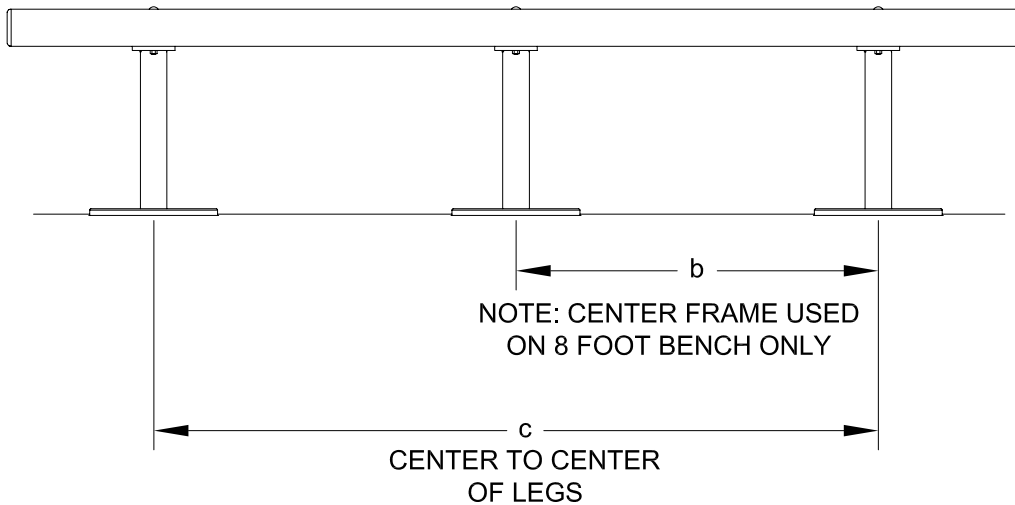
P.O. Box 946 • Cherokee, IA 51012-0946 • PH: 712-225-5115 • 800-762-5002 • FAX: 712-225-5796

E-mail: [pilotrock@rjthomas.com](mailto:pilotrock@rjthomas.com) • Web Site: <http://www.pilotrock.com>

© 2005 R. J. Thomas Mfg. Co., Inc. PILOT ROCK® Park Equipment is a registered trademark of R. J. Thomas Mfg. Co., Inc.



| MODEL NUMBER | DIMENSION |     |    |
|--------------|-----------|-----|----|
|              | a         | b   | c  |
| SWB-4        | 47-1/2    | N/A | 36 |
| SWB-6        | 71-1/2    | N/A | 48 |
| SWB3-8       | 95-1/2    | 34  | 68 |



NOTE:  
LOCAL SOIL  
CONDITIONS  
MAY REQUIRE  
A LARGER  
FOOTING  
(CHECK LOCAL  
CODES)

ALL DIMENSIONS IN INCHES

R. J. **THOMAS MFG. Co., INC.**  
P.O. Box 946 • Cherokee, IA 51012

DRAWN BY  
**WWM**

TITLE MODEL SWB 4, 6, AND 8 FOOT EMBEDDED MOUNT FLAT BENCH  
WITH 4" X 4" RECYCLED PLASTIC TIMBERS

DATE 4-22-05

DWG. NO. **AI-1654**