



Model L-32/TB Multilevel Firering

- **Flanged firering for strength and safety**
- **Four levels of cooking grate height adjustment**
- **Adjustment panels shield grips and hands from heat**
- **Public use-type spring grips of coiled steel bar**
- **Firering tips back for easy cleaning**
- **Tip-back anchors embedded in concrete footings provide permanent location**
- **“Bottomless” design installs without concrete pad**
- **Utility shelf option**
- **Quality construction throughout**

AVAILABLE OPTIONS

Utility Shelf

SPECIFICATIONS:

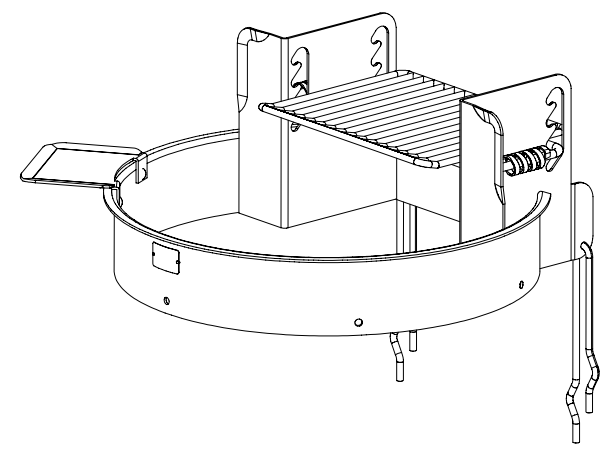
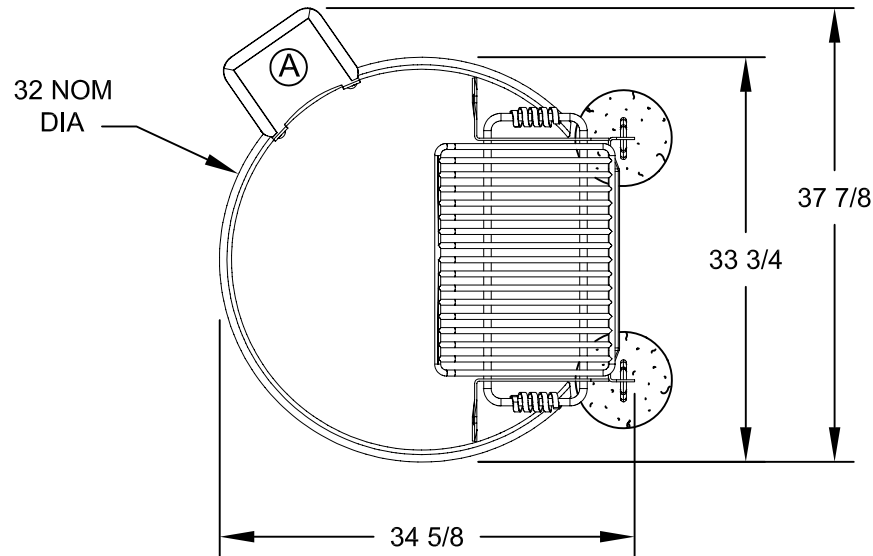
- **Model L-32/TB** shall have a 32" diameter firering constructed from 3/16" plate steel with a formed (NOT WELDED) 1" flanged lip around the top of the ring to provide reinforcement in lieu of a 1-1/4" x 1-1/4" x 3/16" steel angle cross brace. Ring shall be welded to two 3/16" plate steel grate support panels for overall dimensions of 33-3/4" wide by 34-5/8" long. Fire barrier shall be 6-1/4" high with five 9/16" dia. draft/drain holes located around the perimeter.
- 300 sq. in. cooking grate shall be constructed from 1/2" dia. A-36 steel bar with grate bars spaced 1-1/8" on centers. Grate shall be constructed with a one-piece wrap-around perimeter bar of 1/2" dia. A-36 steel bar with formed corners and creased front edge to control heat expansion and retain food.
- Grate shall be securely welded to two 5/8" dia. steel support bars made to adjust in vertical slots die punched in the heat panels. Grate handles shall be provided with two substantially constructed spring coil grips suitable for public use made from 1/8" x 1/2" flat steel bar (not wire springs).
- Grate shall be supported in four locations by two 3/16" plate steel heat panels. Side heat panels shall have 90° bend and edge flare die-formed into one vertical edge adding strength to the entire unit and providing a heat shield for grate adjustment. Back panel of 3/16" plate steel shall be welded to heat panels and shall be edge stiffened with a die-formed flange for extra strength.
- **STANDARD:** Ring shall be provided with hinged anchoring device to allow ring to tip upward for easy cleaning. Two 1/2" dia. steel "U" anchor pins with deformed ends shall insert 15" into concrete footings (indicated by /TB in model no.).
- Entire unit shall be finished in high temperature, heat resistant, nontoxic black enamel.
- **Optional:** Firering shall be provided with a 3/16" x 7-1/8" x 9-5/8" steel utility shelf. (Add /S to model no. Ex.: L-32/TB/S.)

R.J. THOMAS MFG. CO., INC.

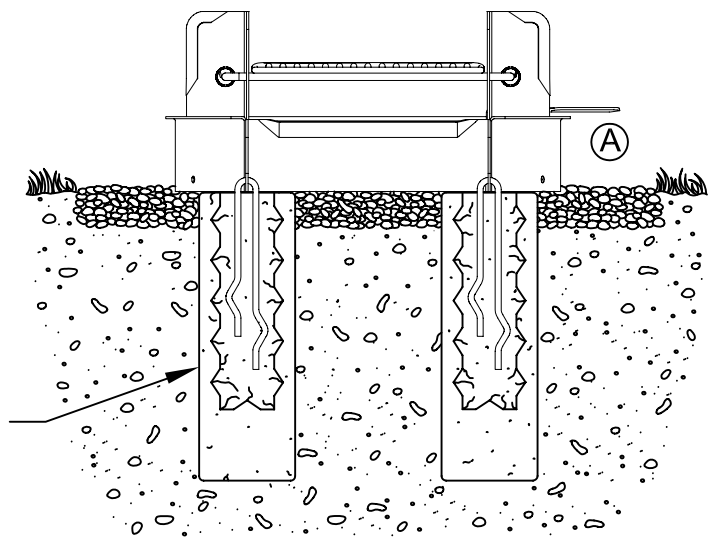
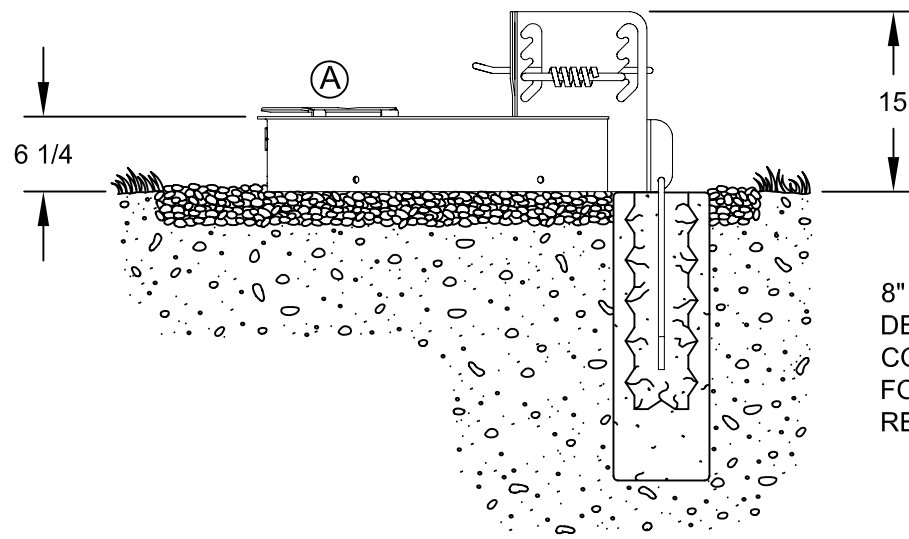
P.O. Box 946 • Cherokee, IA 51012-0946 • PH: 712-225-5115 • 800-762-5002 • FAX: 712-225-5796

E-mail: pilotrock@rjthomas.com • Web Site: <http://www.pilotrock.com>

© 2002 R. J. Thomas Mfg. Co., Inc. PILOT ROCK® Park Equipment is a registered trademark of R. J. Thomas Mfg. Co., Inc.



(A) OPTIONAL UTILITY SHELF - ADD /S TO MODEL NUMBER



8" DIA x 24" DEEP (18" MIN) CONCRETE FOOTING RECOMMENDED

ALL DIMENSIONS IN INCHES

R. J. THOMAS MFG. CO., INC. P.O. Box 946 • Cherokee, IA 51012	DRAWN BY WWM	TITLE L-32/TB MULTILEVEL CAMPFIRE RING WITH TIP-BACK ANCHORS -SHOWN WITH OPTIONAL UTILITY SHELF	DATE 2-01-02
			DWG. NO. AI-1009-A