



Model **D2-48/SS B2** Grill
with two Optional Utility Side Shelves

SPECIFICATIONS:

- **Model D2-48 B2** shall have a cooking area of 1040 sq. in. with two grates and a 32" x 32-1/2" firebox with nom. 8" high sides.
- Entire firebox shall be fabricated from 3/16" steel plate. All exposed corners shall be rounded to 1-1/2" radius and all edge connections shall be entirely welded. Firebox shall be ring reinforced and allowance for drainage shall be provided. The firebox shall have reinforcing flanges die-formed into back panels and reinforcing flares die-formed into side panels.
- The grates shall be infinitely adjustable from 3-3/4" to 12" above the bottom of the firebox and tip back to provide unobstructed access to the firebox for cleaning and fire building.
- Grates shall be structurally reinforced so that they will support the weight of two or more persons without sagging or bending.
- Grates shall be secured to firebox by 2 vertical 3/4" dia. A-36 steel bars that shall allow adjustment and prevent removal of grates from the grill.
- Grates shall be constructed from 5/8" dia. A-36 steel bars around the perimeter, 3/4" dia. A-36 steel bars for handles and 1/2" dia. A-36 steel bars to provide the grate surface.
- Grates shall be provided with two substantial spring grip handles suitable for use by the public made from 1/8" x 1/2" steel flat bar.
- A base attachment mechanism constructed from 3/16" steel plate shall be provided that is absolutely theft-proof, shall allow unrestrained continuous rotation in either direction and shall maintain a stable cooking surface.
- **Standard:** Grill shall be supported by a 3-1/2" O.D., 40" long, steel pipe for permanent installation in concrete footing (indicated by B2 in model no.).
- Entire unit shall be finished in high temperature, heat resistant, nontoxic black enamel.
- **Optional:** The grill shall be provided with a 3/16" x 9" x 19-1/4" steel plate utility shelf. Add /S to model no. for 1 shelf; add /SS for 2 shelves. Ex.: D2-48/S B2 or D2-48/SS B2.
- **Optional:** Grill shall be provided with a bolt-down base plate base for hard surface mounting applications. Replace "B2" in model no. with "B3".
- **Optional:** Grill shall be provided with a portable disc base. Replace "B2" in model no. with "B4".
- **Optional:** Grill shall be provided with a portable caster base. To specify, change "B2" in model no. to "B14". Ex.: D2-48 B14.

- **Two patented, infinitely adjustable cooking grates**
- **Structurally reinforced grates are virtually indestructible**
- **Grates tip back for fire building and cleaning**
- **Firebox is ring-reinforced on the bottom to combat heat warpage along with die-formed back flanges and side panel flares**
- **Patented, theft-proof base attachment**
- **Full 360° rotation for draft control**
- **Public use-type spring grips of coiled steel bar**
- **Utility shelf option**
- **Quality construction throughout**

AVAILABLE OPTIONS

- One or Two Side Utility Shelves
- Portable Disk Base
- Bolt-down Base Plate Base
- Portable Caster Base

Patent Nos. 4,403,596 and D274,780

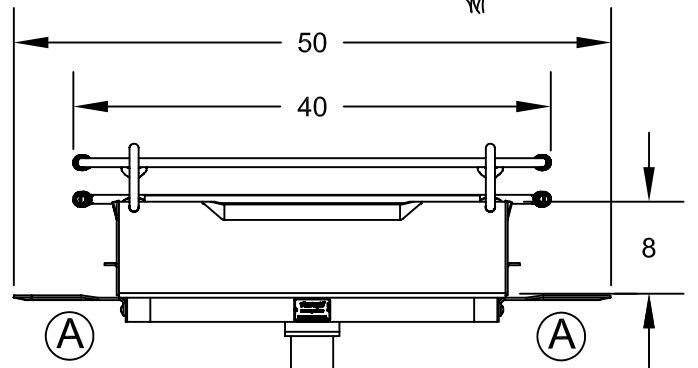
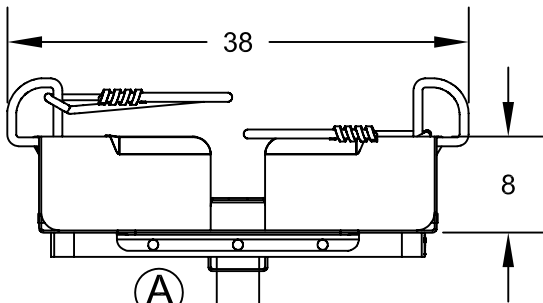
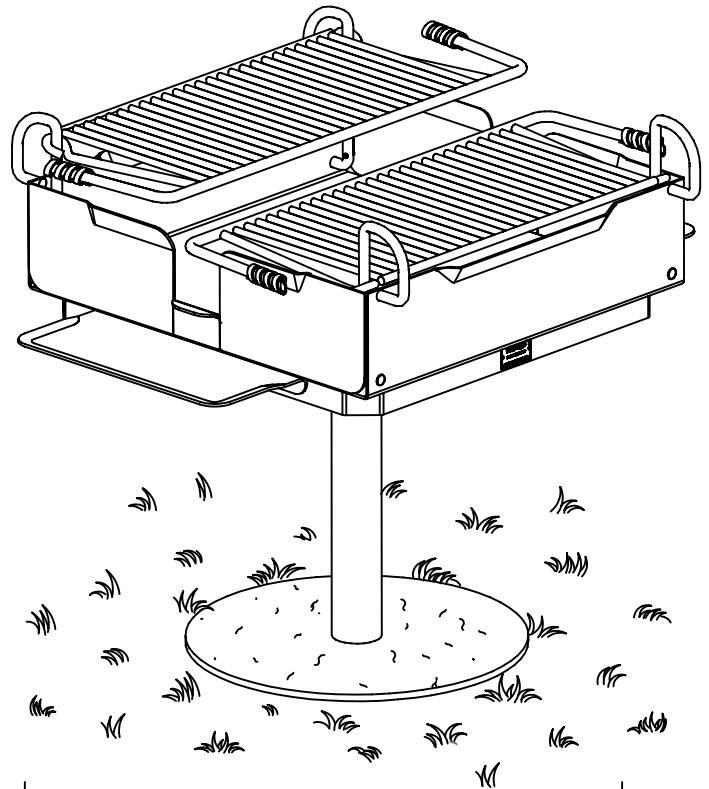
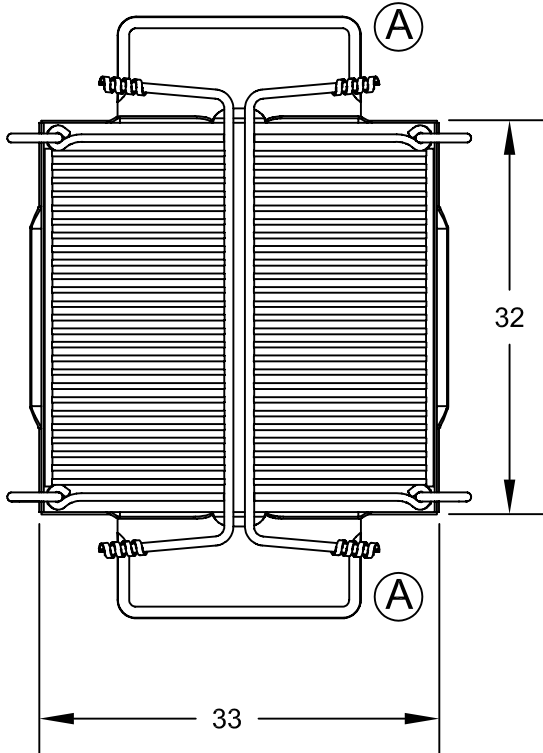
R.J. THOMAS MFG. CO., INC.

P.O. Box 946 • Cherokee, IA 51012-0946 • PH: 712-225-5115 • 800-762-5002 • FAX: 712-225-5796

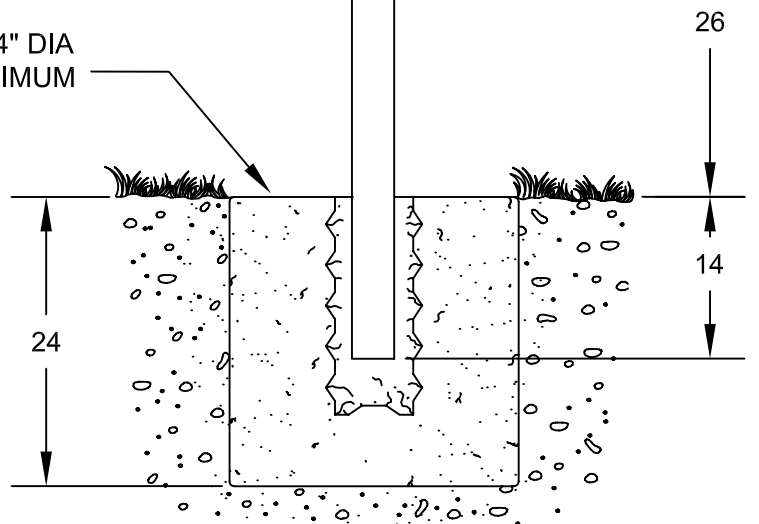
E-mail: pilotrock@rjthomas.com • Web Site: <http://www.pilotrock.com>

© 2003 R. J. Thomas Mfg. Co., Inc. PILOT ROCK® Park Equipment is a registered trademark of R. J. Thomas Mfg. Co., Inc.

(A) OPTIONAL UTILITY SHELVES - ADD /S OR /SS TO MODEL NO. FOR ONE OR TWO SHELVES



24" DIA
MINIMUM



NOTE:
LOCAL SOIL CONDITIONS MAY
REQUIRE A LARGER FOOTING

ALL DIMENSIONS IN INCHES

R. J. **THOMAS MFG.**
Co., Inc.
P.O. Box 946
Cherokee, IA 51012

TITLE **D2-48 PARK GRILL SHOWN WITH B2 BASE
& OPTIONAL UTILITY SHELVES**

Specification Bulletin SPC-GR-004

DRAWN BY **JCT**

DATE 06/29/00

DWG. NO. AI-1016-A