



*Model BB-1/PR single bike parking block  
molded from Red Recycled Plastic*

- **Solid, heavy weight block molded from 100% Recycled Plastic**
- **Solid color throughout with U.V. stabilizer for ultraviolet protection**
- **1, 3, and 4 bike models available**
- **Holds front or rear wheels of any size**
- **Eye bolt for securing bike locks**

## **SPECIFICATIONS:**

- **BB Series** bike parking block shall be a solid single molded unit of 100% recycled plastic 30" long, 12" wide, and 8" high. A 13-1/2" radius x 2-9/16" wide wheelwell shall be formed in the top of the block to hold the front or rear wheel of common sizes of bicycles. A large drain hole in the bottom of the wheelwell shall allow drainage of water and dirt.
- **Model BB-1/PC** shall be a single block to hold one bike.
- Multiple bike blocks shall be connected by two 2" x 4" (nom.) recycled plastic planks secured in recesses in bottom of the block to provide parking for multiple bikes.
- **Model BB-3/PC** shall be 48" inches long with three blocks spaced to hold three bikes 18" center to center.
- **Model BB-4/PC** shall be 72" inches long with four blocks spaced to hold four bikes 20" center to center.
- Block shall be anchored to solid surfaces by means of 7/16" diameter hole at each end. Two 3/8" dia. concrete anchors for each block are included.
- Bike security shall be provided by a 3/8" dia. eye-bolt with a 1" dia. eye for attachment of bike lock cables. Eye-bolt shall be mounted in a way to prevent removal when block is secured to surface.
- **Standard:** Bike block shall be made of 100% Recycled Plastic molded with solid Cedar color (indicated by PC in model no., e.g. BB-1/PC) formed throughout and a U.V. stabilizer added for ultra-violet protection.
- **Optional:** Color choices of Recycled Plastic components. For optional colors choices see Specification Bulletin # SPC-CO-001.

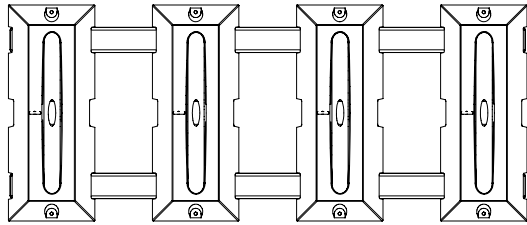
## **AVAILABLE OPTIONS**

- **1, 3, and 4 bike models**
- **Choice of colors of recycled plastic**

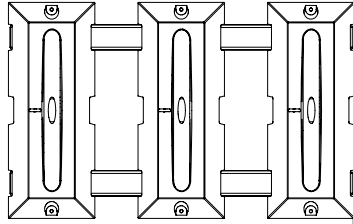
**RJThomas Mfg. Co., Inc.**

PO Box 946 • Cherokee, IA 51012-0946 • PH: 712-225-5115 • 800-762-5002 • FAX: 712-225-5796  
E-mail: pilotrock@rjthomas.com • Web Site: <http://www.pilotrock.com>

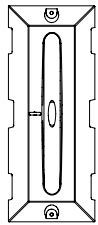
© 2008 RJThomas Mfg. Co., Inc. PILOT ROCK® Park Products is a registered trademark of RJThomas Mfg. Co., Inc.



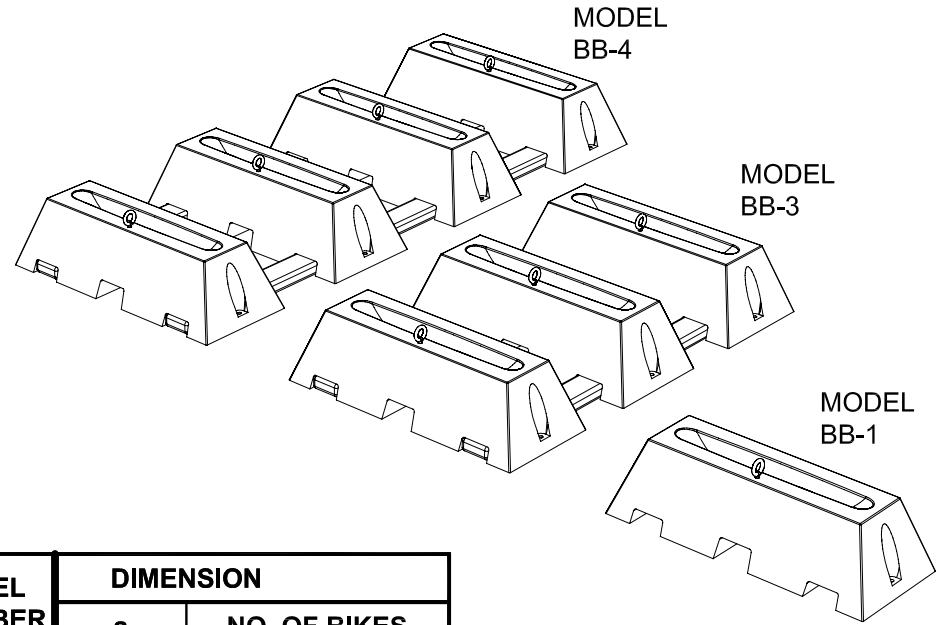
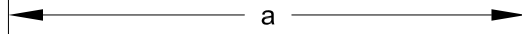
MODEL  
BB-4



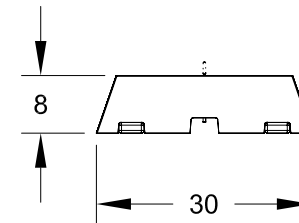
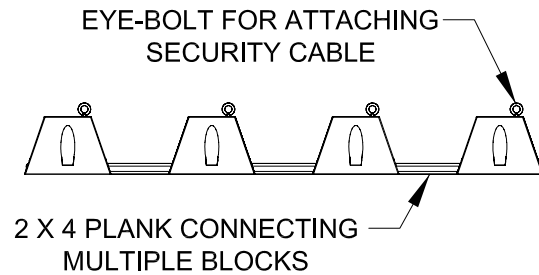
MODEL  
BB-3



MODEL  
BB-1



| MODEL NUMBER | DIMENSION |              |
|--------------|-----------|--------------|
|              | a         | NO. OF BIKES |
| BB-1         | 11-7/8    | 1            |
| BB-3         | 48        | 3            |
| BB-4         | 72        | 4            |



ALL DIMENSIONS IN INCHES

R. J. **THOMAS MFG. Co., Inc.**  
P.O. Box 946 • Cherokee, IA 51012

DRAWN BY  
**WWM**

TITLE MODELS BB-1 SINGLE BIKE, BB-3 THREE BIKE, AND BB-4 FOUR BIKE RECYCLED  
PLASTIC BIKE BLOCK

DATE 7-12-07

DWG. NO. **AI-1800**