

# APT 6 and 8 Foot Double Pedestal Rectangular Table with Aluminum Top and Seats



*Model APT/G-6AL 6 ft. embedded mount double pedestal rectangular table with hot dip galvanized frame and Aluminum top and seats*

- **Permanent embedded mounting**
- **Nontrip, walk-through design**
- **Sturdy 3" x 6" rectangular steel tube pedestals**
- **Frames are hot-dip galvanized after fabrication for superior corrosion resistance**
- **Seats and Top are Aluminum with a clear anodized maintenance free finish**
- **Eight foot model can easily be installed to be handicap accessible**
- **Quality construction throughout**

## AVAILABLE OPTIONS

- **6 or 8 foot lengths**
- **Choice of colors of Powder Coat Finish for steel frame components**
- **Choice of colors of Powder Coat Finish for aluminum top and seats**
- **Surface mount base plate**

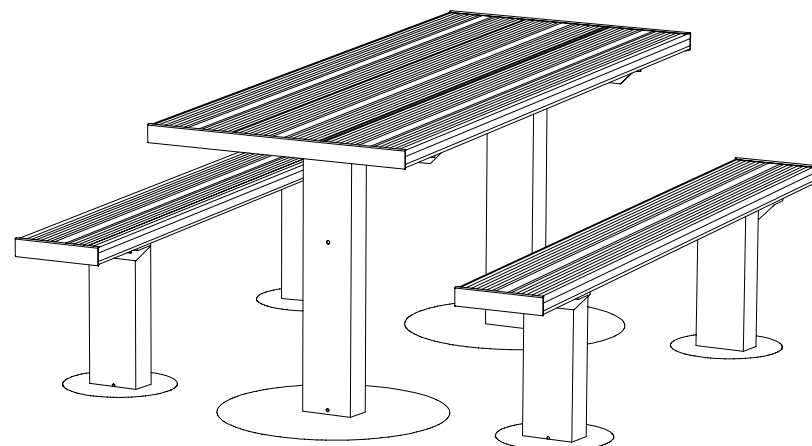
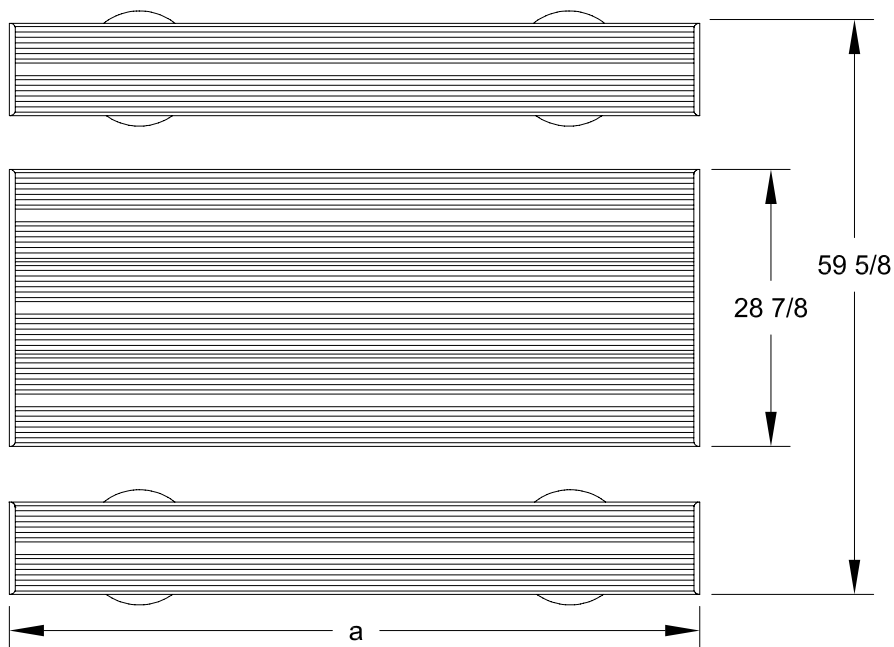
## SPECIFICATIONS:

- **APT Series** Table top and seat end frames shall be one-piece welded construction, fabricated from 3" x 6" x 1/8" wall rectangular structural steel tubing with 2" x 2" x 3/16" A-36 structural grade steel angle for attaching the seats and tops. Exposed ends of rectangular tubing shall be permanently sealed with welded-on steel end caps. Frames are designed to be embedded in a concrete footing.
- **Model APT/G-6** shall have a nominal 6 ft. length.
- **Model APT/G-8** shall have a nominal 8 ft. length.
- Nominal table height shall be 32". Nominal seat height shall be 18-1/2".
- All galvanized fasteners shall be provided for assembly.
- **Standard:** All steel frame components shall be hot-dip galvanized after fabrication to ASTM-A123 to maintain an average zinc coating of 2.0 oz. per sq. ft. of surface area (indicated by "/G" in model no.).
- Aluminum shall be extruded 6063-T6 aluminum alloy in planks with dimensions equivalent to that of 2" x 10" nominal sized lumber. The plank design shall be 1-3/4" x 9-5/8" with four structural reinforcement ribs for greater rigidity. Aluminum planks shall be provided with a clear anodized finish as per anodizing specification 204 R1. Aluminum clips to fasten planks to frames are included.
- Channel end caps shall be of extruded 6063-T6 aluminum alloy provided with a clear anodized finish as per anodizing specification 204 R1. End caps shall be press fitted over ends of aluminum planks and mechanically fastened in place at the factory.
- Table tops are assembled into single units at the factory with one-piece end caps across each end.
- **Optional:** All steel frame components shall have powder coat finish. For color choices see Specification Bulletin # SPC-CO-001.
- **Optional:** Aluminum top and seat planks and end caps shall have powder coat finish. For color choices see Specification Bulletin # SPC-CO-001.
- **Optional:** Frame shall be provided with a 3/8" x 8" x 8" steel base plate to bolt table to existing concrete pad. To specify add "/P" after the "APT" in the model no., e.g. APT/P/G-6AL. (Anchor bolts not included.)
- **Accessible Option: Model APT-8** can be made handicap accessible by mounting table top frame pedestals closer to center of table.

## RJThomas Mfg. Co., Inc.

PO Box 946 • Cherokee, IA 51012-0946 • PH: 712-225-5115 • 800-762-5002 • FAX: 712-225-5796  
E-mail: pilotrock@rjthomas.com • Web Site: <http://www.pilotrock.com>

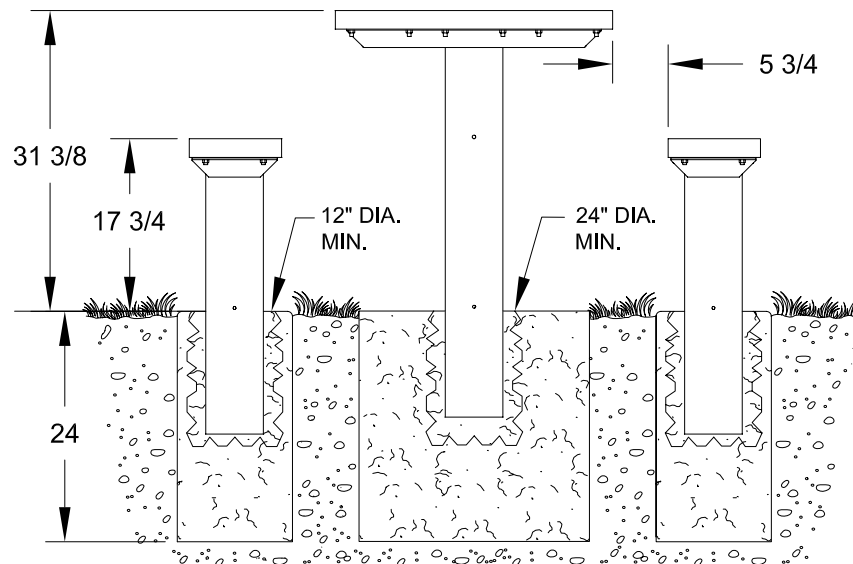
© 2008 RJThomas Mfg. Co., Inc. PILOT ROCK® Park Products is a registered trademark of RJThomas Mfg. Co., Inc.



MODEL NUMBER	DIMENSION		* NOTE: APT-8 Table can be made handicap accessible by moving each table top frame pedestal closer to center of table to create Knee/Toe Clearance meeting current ADA guidelines.
	a	b	
APT-6	72	44-3/4	
APT-8	96	63*	



NOTE:  
LOCAL SOIL  
CONDITIONS  
MAY REQUIRE  
A LARGER  
FOOTING  
(CHECK LOCAL  
CODES)



ALL DIMENSIONS IN INCHES

R. J. **THOMAS MFG. CO., INC.**  
P.O. Box 946 • Cherokee, IA 51012

DRAWN BY  
**WWM**

TITLE APT SERIES 6 AND 8 FOOT EMBEDDED MOUNT RECTANGULAR DOUBLE PEDESTAL  
TABLE WITH ALUMINUM TOP AND SEATS

DATE 03-21-07

DWG. NO. **AI-1773**