

Riverview Series, Model B70 Surface Mount 4 and 6 Ft. Bench with Plastisol Coated Expanded Steel



*Model B70/CR-6VB Surface Mount Bench
with Red Powder Coat Frames, 6 Ft. long
with Black plastisol coated expanded steel seat.*

- **Comfortable seat design may be accessed from either side**
- **Wide frame curves form comfortable armrests**
- **Sturdy, formed and welded steel frame construction**
- **Design offers extensions to make longer benches with additional armrests**
- **Powder Coat frame finish**
- **Choice of two seat designs**
- **Plastisol Coating heat fused to Steel Seat for durability**
- **Vinyl Plastisol formulated with U.V. stabilizers for ultraviolet protection**
- **Quality construction throughout**

AVAILABLE OPTIONS

4' or 6' models

Laser cut steel seat available

Choice of colors of Powder Coat Finish on steel frame components

Choice of colors of Plastisol Coated steel

SPECIFICATIONS:

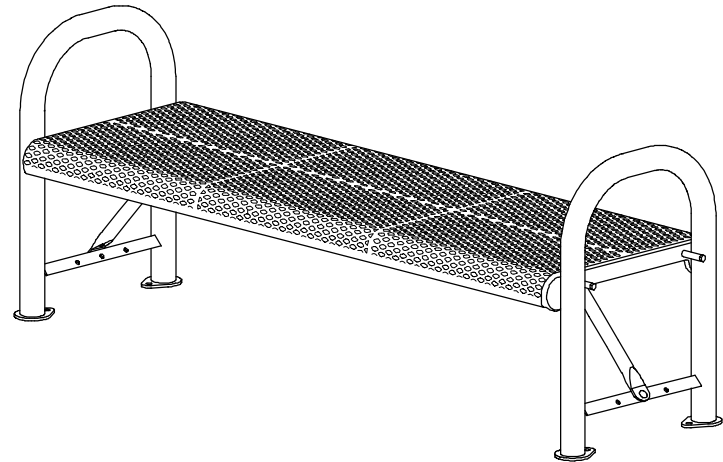
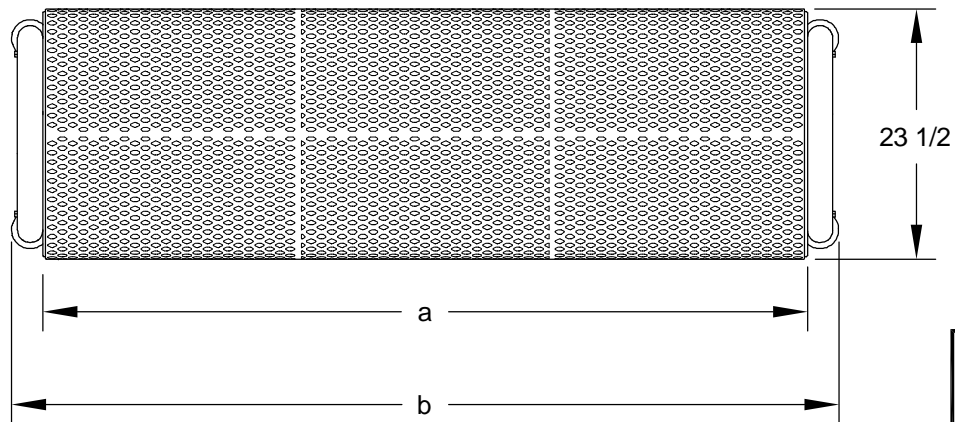
- **Model B70 Series** end frames are one-piece welded construction with frame to meet 2" nominal steel pipe size specifications (2-3/8" O.D.) and each corner to be formed on a nominal 6" centerline radius.
- **Model B70-4** is a nom. 4 ft. in length.
- **Model B70-6** is a nom. 6 ft. in length.
- Frames are supported by diagonal braces of 1-5/16" O.D. x 14 ga. wall steel pipe that connects to the underside of the bench.
- Bench is designed to be permanently surface mounted using 9/16" dia. holes provided in each base plate for use with concrete anchors (anchors not included).
- **Standard:** All steel frame components are finished in Black powder coat (indicated by "/CB" in model no., e.g. B70/CB-4VW).
- **Standard:** Seat is a 23-1/2" wide one-piece welded construction, fabricated from a 3/4-#9 expanded steel surface welded to a 1/4" x 1-1/2" flat steel substructure. Exposed edges of seat have a rolled 1-1/2" radius. Substructure includes all mounting holes for easy assembly.
- **Standard:** All steel surfaces of the seat are covered with a coating of Brown (indicated by "VW" in model no., e.g. B70/CB-4VW) vinyl Plastisol formulated with high impact additives, UV inhibitors, and an anti-microbial to resist mold and mildew. Plastisol coating is permanently heat-fused to the steel to an average thickness of 125 mils (1/8") for an overall average thickness, including top and bottom coatings, of 250 mils (1/4").
- All fasteners are provided for assembly.
- **Optional:** Color choices of powder coated steel frame components. For optional color choices see Specification Bulletin #SPC-CO-001.
- **Optional:** Color choices of plastisol coated steel components. For optional color choices see Specification Bulletin #SPC-CO-001.
- **Optional:** Plastisol coated steel seat available with laser cut 12 ga. steel in place of expanded steel. (To specify, change "VW" in model no. to "LW", e.g. B70/CB-4LW.) Please inquire for further information.
- Bench extensions of a matching design are available on 4 and 6 ft. bench models. For additional information please refer to Specification Bulletin #SPC-BC-138.

RJThomas Mfg. Co., Inc.

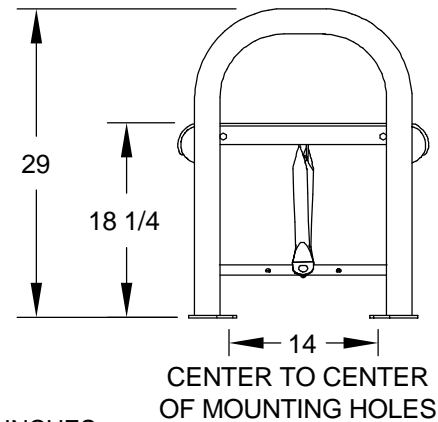
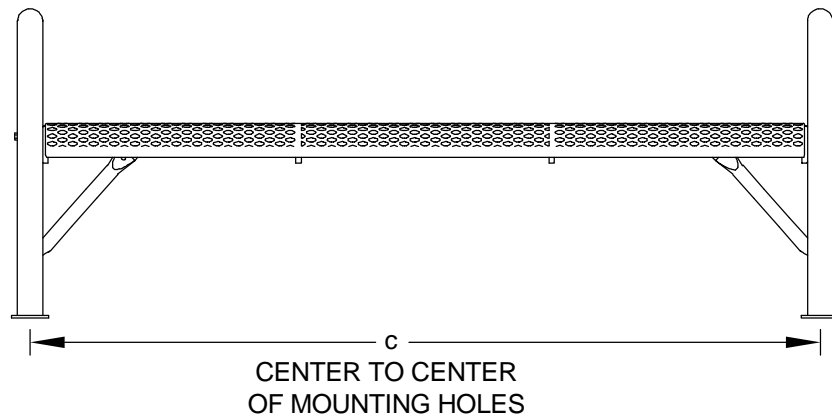
PO Box 946 • Cherokee, IA 51012-0946 • PH: 712-225-5115 • 800-762-5002 • FAX: 712-225-5796

E-mail: pilotrock@rjthomas.com • Web Site: <http://www.pilotrock.com>

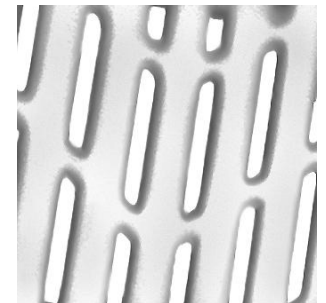
© 2008 RJThomas Mfg. Co., Inc. PILOT ROCK® Park Products is a registered trademark of RJThomas Mfg. Co., Inc.



MODEL NUMBER	DIMENSION		
	a	b	c
B70-4	47 3/4	53 5/8	50 1/8
B70-6	71 3/4	77 5/8	74 1/8



OPTIONAL SEAT DESIGN



LASER CUT STEEL

ALL DIMENSIONS IN INCHES

RJThomas Mfg. Co., Inc.
P.O. Box 946 • Cherokee, IA 51012-0946

DRAWN BY
WWM

TITLE RIVerview SERIES MODEL B70 4 AND 6 FOOT FLAT SURFACE MOUNT BENCH
WITH PLASTISOL COATED EXPANDED STEEL SEAT

DATE 8-29-08

DWG. NO. AI-1729