



*Model BE70/CU-6VA Surface Mount Bench Extension
with Blue Powder Coat Frames, 6 Ft. long with Gray Plastisol Coated
Expanded steel seat. (Shown with Model B70/CU-6VA Bench.)*

- **Comfortable seat design may be accessed from either side**
- **Designed to join easily with Model B70 benches to make longer benches with additional armrests**
- **Wide curves at the corners of the frames also serve as comfortable armrests**
- **Sturdy, formed and welded steel frame construction**
- **Powder Coat frame finish**
- **Choice of two seat designs**
- **Plastisol Coating heat fused to Steel Seat for durability**
- **Vinyl Plastisol formulated with U.V. stabilizers for ultraviolet protection**
- **Quality construction throughout**

AVAILABLE OPTIONS

4' or 6' models

Choice of colors of Powder Coat Finish on steel frame components

Laser cut steel seat available

Choice of colors of Plastisol Coated steel

SPECIFICATIONS:

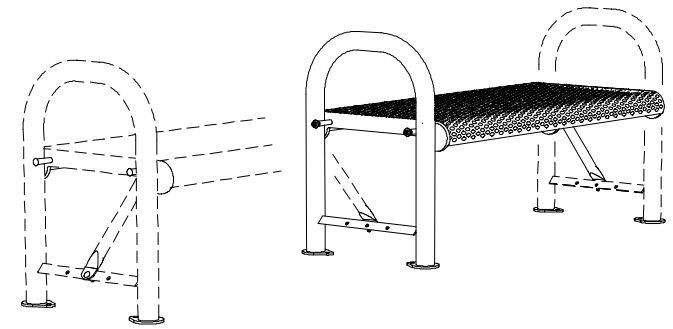
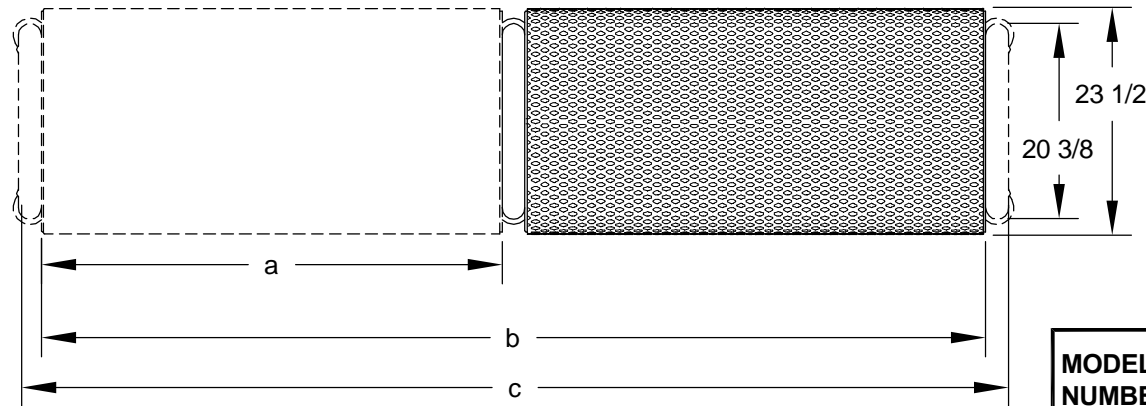
- **Model BE70 Series** extension frame is a one-piece welded construction with frame to meet 2" nominal steel pipe size specifications (2-3/8" O.D.) and each corner to be formed on a nominal 6" centerline radius.
- Model BE70 bench extension is used with Model B70 4 and 6 ft. benches. Multiple extensions can be added to create any length of bench in 4 or 6 ft. increments. The extension frame replaces one bench end frame which is then moved to the end of the extension. (For information on Model B70 benches refer to Specification Bulletin #SPC-BC-123.)
- Bench is designed to be permanently surface mounted using 9/16" dia. holes provided in each base plate for use with concrete anchors (anchors not included).
- **Model BE70-4** is a nom. 4 ft. in length.
- **Model BE70-6** is a nom. 6 ft. in length.
- **Standard:** Frame is finished in Black powder coat (indicated by "/CB" in model no., e.g. BE70/CB-4VW).
- **Standard:** Seat is a 23-1/2" wide one-piece welded construction, fabricated from a 3/4-#9 expanded steel surface welded to a 1/4" x 1-1/2" flat steel substructure. Exposed edges of seat have a rolled 1-1/2" radius. Substructure includes all mounting holes for easy assembly.
- **Standard:** All steel surfaces of the seat are covered with a coating of Brown (indicated by "VW" in model no., e.g. BE70/CB-4VW) vinyl Plastisol formulated with high impact additives, UV inhibitors, and an anti-microbial to resist mold and mildew. Plastisol coating is permanently heat-fused to the steel to an average thickness of 125 mils (1/8") for an overall average thickness, including top and bottom coatings, of 250 mils (1/4").
- All fasteners are provided for assembly.
- **Optional:** Color choices of powder coated steel frame components. For optional color choices see Specification Bulletin #SPC-CO-001.
- **Optional:** Color choices of plastisol coated steel components. For optional color choices see Specification Bulletin #SPC-CO-001.
- **Optional:** Plastisol coated steel seat available with laser cut 12 ga. steel in place of expanded steel. (To specify, change "VW" in model no. to "LW", e.g. B70/CB-4LW.) Please inquire for further information.

RJThomas Mfg. Co., Inc.

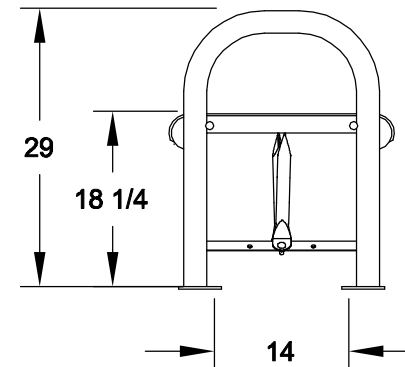
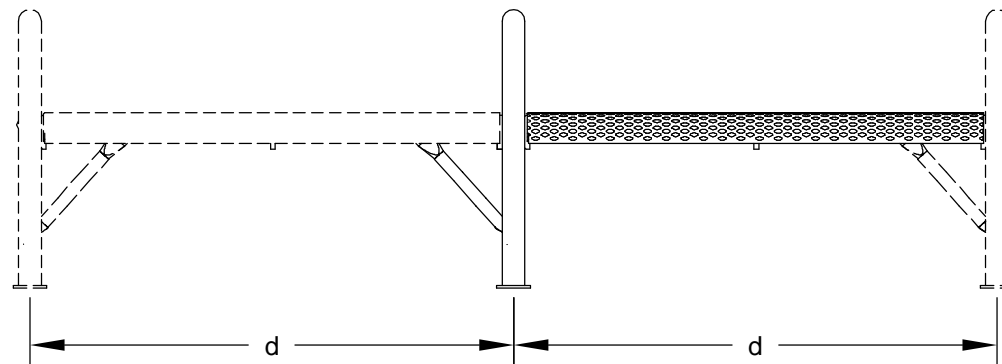
PO Box 946 • Cherokee, IA 51012-0946 • PH: 712-225-5115 • 800-762-5002 • FAX: 712-225-5796

E-mail: pilotrock@rjthomas.com • Web Site: <http://www.pilotrock.com>

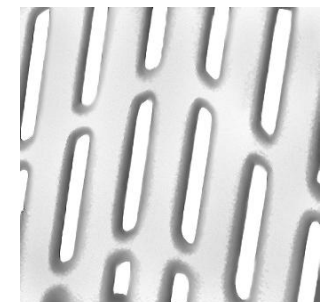
© 2008 RJThomas Mfg. Co., Inc. PILOT ROCK® Park Products is a registered trademark of RJThomas Mfg. Co., Inc.



MODEL NUMBER	DIMENSION			
	a	b	c	d
B70-4	48	98 3/8	104 1/4	50 3/8
B70-6	72	146 3/8	152 1/4	74 3/8



OPTIONAL SEAT DESIGN



LASER CUT STEEL

RJThomas Mfg. Co., Inc.
P.O. Box 946 • Cherokee, IA 51012-0946

DRAWN BY
WWM

TITLE RIVERVIEW SERIES MODEL BE70 4 AND 6 FOOT FLAT SURFACE MOUNT
EXTENSION FOR MODEL B70 BENCHES WITH PALSTISOL COATED EXPANDED
STEEL SEAT

DATE 8-29-08

DWG. NO. AI-1856