



*Model MA-32/17/S Campfire Cooksite with Optional Shelf
(Note: anchor pins not used in this installation)*

- **Flanged firering for strength and safety**
- **Infinitely adjustable cooking grate**
- **Structurally reinforced grate is virtually indestructible**
- **Grate tips back and hangs flat against back panel for maximum access to fire**
- **Unique handle design allows easy positioning of grate and keeps handle grips outside of firering**
- **Public use-type spring grips of coiled steel bar**
- **“Bottomless” design with aggregate fill installs on any surface**
- **Recommended aggregate fill raises fire to comfortable working height**
- **Utility shelf option**
- **Quality construction throughout**

AVAILABLE OPTIONS

Utility Shelf
Heat Shield

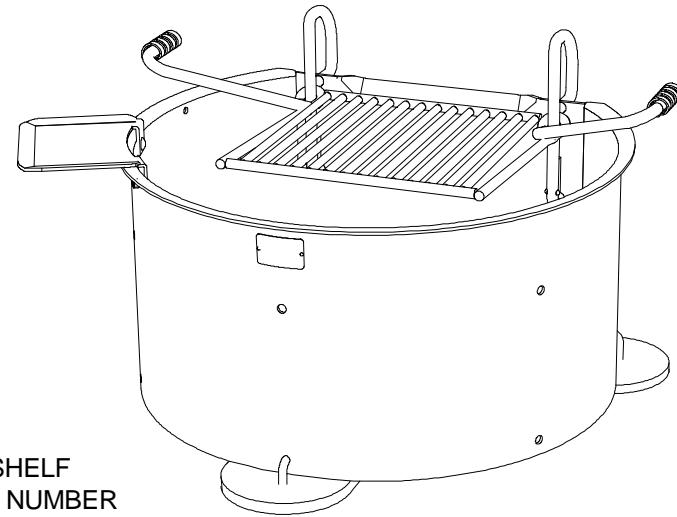
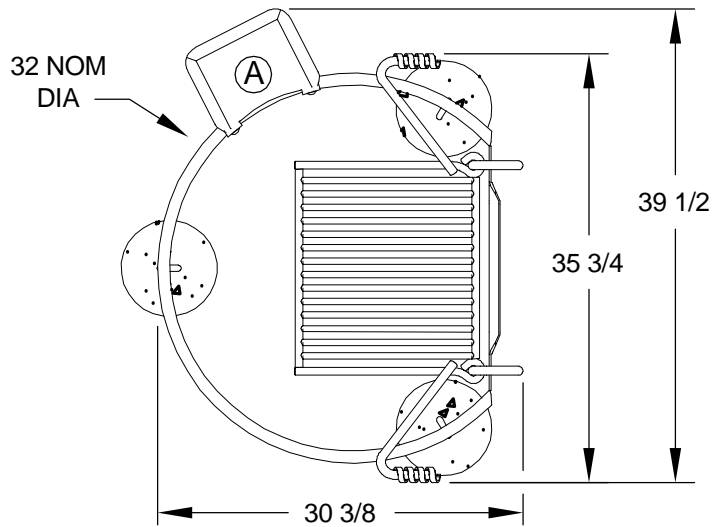
SPECIFICATIONS:

- **Model MA-32/17/PA** is a 16-3/8" tall “D” shaped steel ring, 32" in diameter with a 20" flat area behind the grate.
 - The ring is constructed from 3/16" thick steel with a formed (NOT WELDED) 1" flanged lip around the curved section and a formed flange across the flat back at top of ring to provide strength to the ring assembly and eliminate the vertical edge. 9/16" dia. holes spaced around the ring at fire level and the bottom perimeter provide draft and drainage.
 - 270 sq. in. grate is constructed from 5/8" dia. A-36 steel bars around the perimeter, 3/4" dia. A-36 steel bars for the handles and 1/2" dia. A-36 steel bars to provide the grate surface. Grate is secured to firering by two vertical 3/4" dia. A-36 steel bars that allows 7" of infinite adjustment within and above the ring and allows the grate to hang vertically against the back of the ring in a safe nonobtrusive manner when tipped back for fire building or when not needed.
 - Grate is structurally reinforced to withstand the weight of two or more people standing on it without permanently deforming or bending.
 - Grate shall be provided with two adjusting handles with substantial spring grips suitable for public use made from 1/8" x 1/2" steel flat bar that remains outside the fire barrier at all positions.
 - Firering is designed to be filled with customer supplied coarse aggregate fill to a level 9" below top of ring to raise fire to proper cooking height and protect hard surfaces from heat damage.
 - Unit is provided with three 1/2" dia. anchor pins for concrete embedment (indicated by /PA in model no., e.g. MA-32/17/PA).
 - Entire unit is finished in high temperature, heat resistant, nontoxic black enamel.
 - **Optional:** Firering is provided with a 3/16" x 7-1/8" x 9-5/8" steel plate utility shelf. (Add /S to model no., e.g. MA-32/17/PA/S.)
 - **Optional:** Firering is provided with a 10 ga., 8" high, steel heat shield. (Add /H to model no., e.g. MA-32/17/PA/H.)
- Note: The optional utility shelf fits both firering and optional heat shield. (When ordering both options, add /H/S to model no. Ex.: MA-32/17/PA/H/S.)

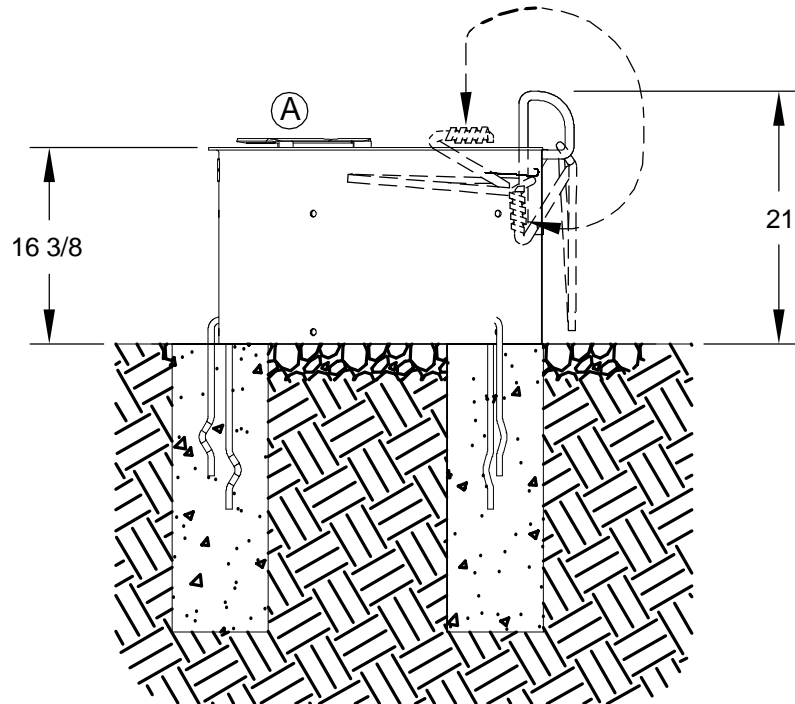
RJThomas Mfg. Co., Inc.

PO Box 946 • Cherokee, IA 51012-0946 • PH: 712-225-5115 • 800-762-5002 • FAX: 712-225-5796
E-mail: pilotrock@rjthomas.com • Web Site: <http://www.pilotrock.com>

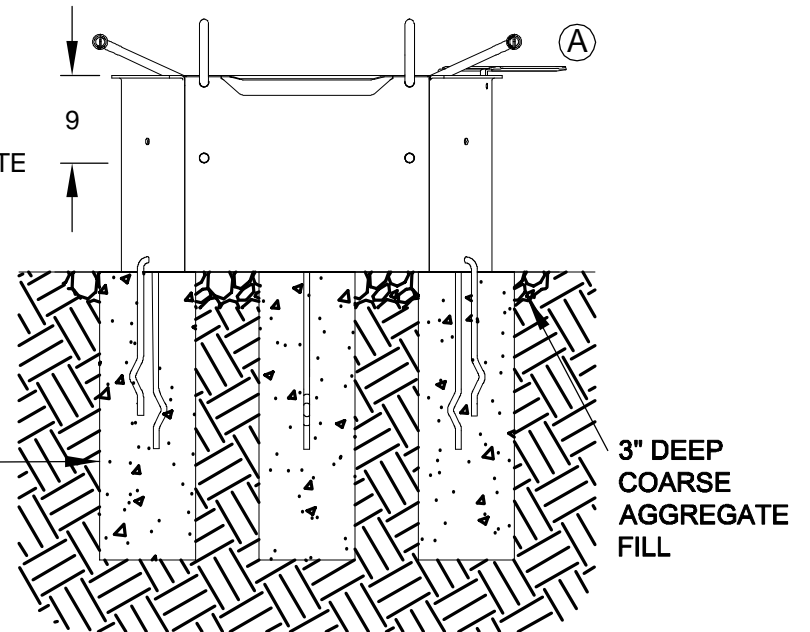
© 2008 RJThomas Mfg. Co., Inc. PILOT ROCK® Park Products is a registered trademark of RJThomas Mfg. Co., Inc.



Ⓐ OPTIONAL UTILITY SHELF
- ADD /S TO MODEL NUMBER



FILL TO 9"
BELOW
TOP RIM
OF RING
WITH
COARSE
AGGREGATE
FILL



8" DIA x 24"
DEEP (18" MIN)
CONCRETE
FOOTING
RECOMMENDED

3" DEEP
COARSE
AGGREGATE
FILL

ALL DIMENSIONS IN INCHES

RJThomas Mfg. Co., Inc.
P.O. Box 946 • Cherokee, IA 51012-0946

DRAWN BY
WWM

TITLE **MA-32/17/PA ELEVATED CAMPFIRE COOKSITE WITH PIN ANCHORS**
-SHOWN WITH OPTIONAL UTILITY SHELF

DATE 9-25-08

DWG. NO. **AI-1416**