

Model I-20 Tip-back Ground Stove



Model I-20 Tip-back Ground Stove

- **Grate and hot plate cooking surfaces in one grill**
- **Firebox tips back for easy fire building and cleaning**
- **Public use-type spring grip of coiled steel bar**
- **Quality construction throughout**

SPECIFICATIONS:

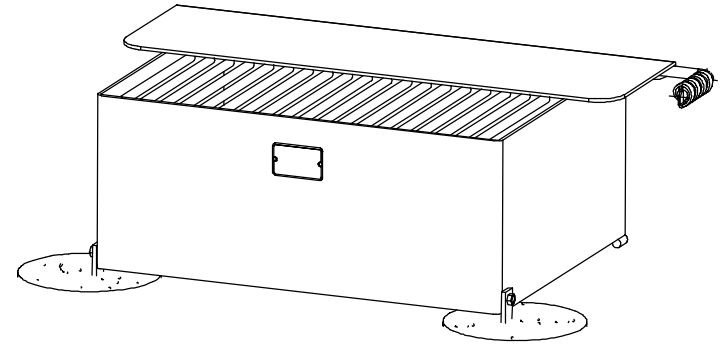
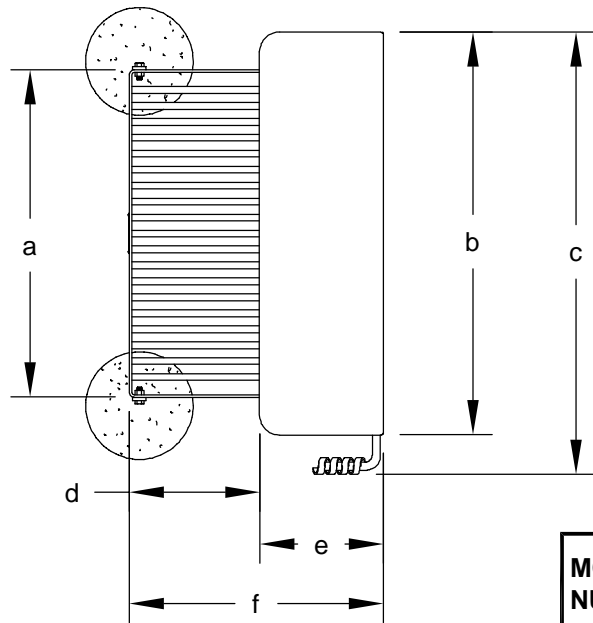
- **Model I-20** is an open bottom grill designed to sit on a ground base of coarse aggregate gravel. Two tip-back anchors of A-36 steel flat bar for permanent concrete installation are included. A coil spring grip handle of 1/8" x 1/2" steel flat bar on 5/8" dia. A-36 round bar is provided for tipping box for easy cleaning.
- Firebox is 18-1/2" x 27" x 9" high with 3/16" plate steel sides. Corners are die-formed. Front of box is open for fire tending.
- Cooking surface includes a 3/16" x 7" x 24" hot plate with a 1" lip formed across the front and 1/2" dia. A-36 steel grate bars welded to the firebox. Hot plate area is 168 sq. in. Grate area is 224 sq. in.. Total cooking surface is 392 sq. in.
- Unit is finished in high temperature, heat resistant, nontoxic black enamel.

AVAILABLE OPTIONS

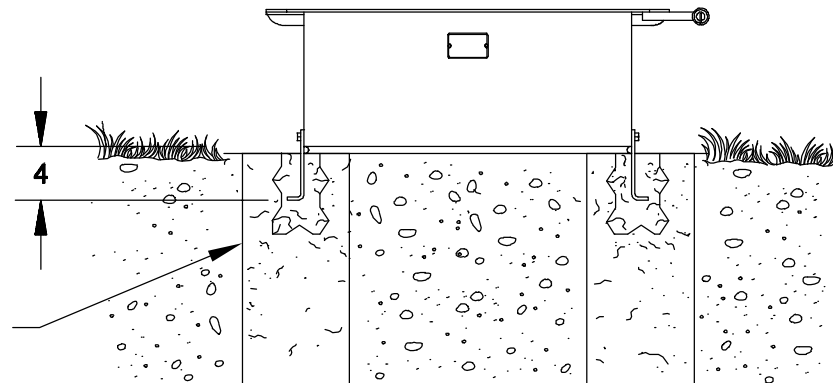
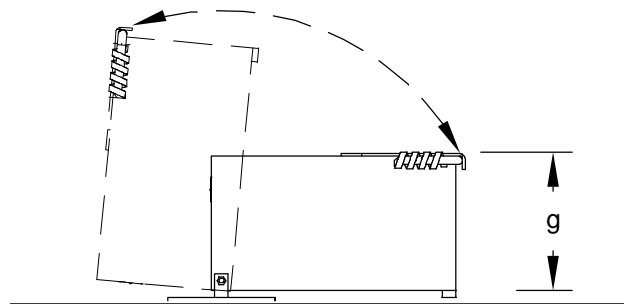
RJThomas Mfg. Co., Inc.

PO Box 946 • Cherokee, IA 51012-0946 • PH: 712-225-5115 • 800-762-5002 • FAX: 712-225-5796
E-mail: pilotrock@rjthomas.com • Web Site: <http://www.pilotrock.com>

© 2008 RJThomas Mfg. Co., Inc. PILOT ROCK® Park Products is a registered trademark of RJThomas Mfg. Co., Inc.



MODEL NUMBER	DIMENSION						
	a	b	c	d	e	f	g
I-20	20 3/8	24	26 15/16	11 3/16	7 3/16	18 3/8	8 11/16
I-24	24 3/8	30	32 15/16	9 11/16	9 3/16	18 7/8	10 5/16



ALL DIMENSIONS IN INCHES

RJThomas Mfg. Co., Inc.
P.O. Box 946 • Cherokee, IA 51012-0946

DRAWN BY
WWM

TITLE I-20 AND I-24 GROUND STOVES WITH TIP BACK ANCHORS

DATE 10-09-08

DWG. NO. AI-1725